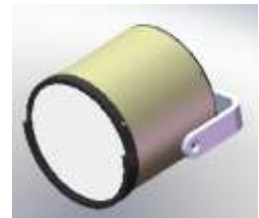


FLASH STIMULATOR TYPE BM 1621L

The BM1621L Flash stimulator is an instrument for both research and clinical applications; it allows to generate flash stimuli calibrated either in cd/m^2 or in logarithmic units with respect to a standard flash and to control a flash head type BM6007H or Ganzfeld dome type BM6007B9.5 - BM6007B - BM6007G - BM6007F.

It is possible to completely program the stimulator from a personal computer.

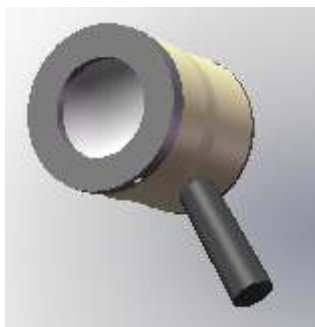


BM6007H

Strobe duration	<5mSec	Memory	Up to 9
Strobe intensities	Variable from -3.5 to +0.5 U.L. in 0.25 U.L. steps (standard flash 3 $\text{cd}/\text{m}^2/\text{sec}$).	Trigger input/output	TTL positive or negative 1msec.
Strobe flash rate	From 0.1 to 50 Hz. or manual repetition	Dimension:	26.4cm W x 8.6 cm. H x 29.1 cm. D.
Strobe calibration	All calibrations are factory made.	Power supply	84-264 Vac 47-63 Hz
Functions control	Manual by keyboard or via RS232 port		

GANZFELD STIMULATORS

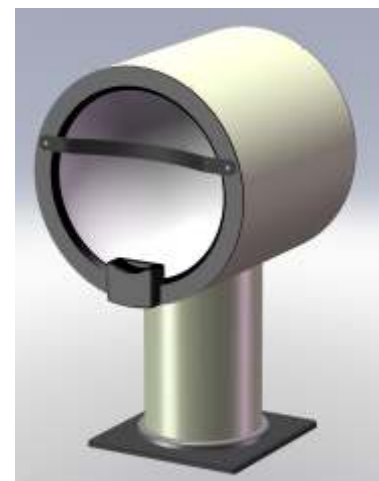
BM6007B9.5 - BM6007B - BM6007G



BM6007B9.5



BM6007B



BM6007G

Sphere diameter (cm)	9.5	20	30
Flash energy	variable from -3.5 to +1.5	variable from -3.5 to +1.0	variable from -3.5 to +1.0
Background intensity	variab. from 0 to 600 cd/m^2	0-30 cd/m^2	variab. from 0 to 600 cd/m^2
Central fixation	No	Yes	Yes
EOG Fixation (+-15°)	No	No	Yes
Stimulation Mode			
Single Flash	Yes	Yes	Yes
Double Flash	Yes	Yes	Yes
ON/OFF	Yes	No	Yes
EOG	No	No	Yes